

**SAFB1 / SAFB Antibody (aa345-357, clone 6F7)**  
**Mouse Monoclonal Antibody**  
**Catalog # ALS11870****Specification**

---

**SAFB1 / SAFB Antibody (aa345-357, clone 6F7) - Product Information**

Application	WB, IHC-P, IF, IP
Primary Accession	<a href="#">Q15424</a>
Reactivity	Human, Monkey
Host	Mouse
Clonality	Monoclonal
Calculated MW	103kDa KDa
Dilution	WB~~1:1000 IHC-P~~N/A IF~~1:50~200 IP~~N/A

**SAFB1 / SAFB Antibody (aa345-357, clone 6F7) - Additional Information****Gene ID** 6294**Other Names**

Scaffold attachment factor B1, SAF-B, SAF-B1, HSP27 estrogen response element-TATA box-binding protein, HSP27 ERE-TATA-binding protein, SAFB, HAP, HET, SAFB1

**Target/Specificity**

A synthetic peptide corresponding to amino acids 345-357 (PEARDSKEDGRKF) of the human HET protein.

**Reconstitution & Storage**

Short term 4°C, long term aliquot and store at -20°C, avoid freeze thaw cycles.

**Precautions**

SAFB1 / SAFB Antibody (aa345-357, clone 6F7) is for research use only and not for use in diagnostic or therapeutic procedures.

**SAFB1 / SAFB Antibody (aa345-357, clone 6F7) - Protein Information****Name** SAFB**Synonyms** HAP, HET, SAFB1**Function**

Binds to scaffold/matrix attachment region (S/MAR) DNA and forms a molecular assembly point to allow the formation of a 'transcriptosomal' complex (consisting of SR proteins and RNA polymerase II) coupling transcription and RNA processing (PubMed:<a href="http://www.uniprot.org/citations/9671816" target="\_blank">9671816</a>). Functions as an estrogen receptor corepressor and can also bind to the HSP27 promoter and decrease its

transcription (PubMed:<a href="http://www.uniprot.org/citations/12660241" target="\_blank">12660241</a>). Thereby acts as a negative regulator of cell proliferation (PubMed:<a href="http://www.uniprot.org/citations/12660241" target="\_blank">12660241</a>). When associated with RBMX, binds to and stimulates transcription from the SREBF1 promoter (By similarity).

**Cellular Location**

Nucleus

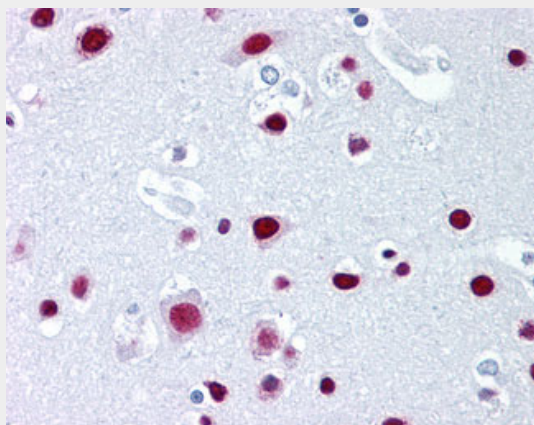
**Tissue Location**

Ubiquitous. Expressed at high levels in the CNS and at low levels in the liver. Expressed in a wide number of breast cancer cell lines

**SAFB1 / SAFB Antibody (aa345-357, clone 6F7) - Protocols**

Provided below are standard protocols that you may find useful for product applications.

- [Western Blot](#)
- [Blocking Peptides](#)
- [Dot Blot](#)
- [Immunohistochemistry](#)
- [Immunofluorescence](#)
- [Immunoprecipitation](#)
- [Flow Cytometry](#)
- [Cell Culture](#)

**SAFB1 / SAFB Antibody (aa345-357, clone 6F7) - Images**

Anti-SAFB antibody IHC of human brain, cortex.

**SAFB1 / SAFB Antibody (aa345-357, clone 6F7) - Background**

Binds to scaffold/matrix attachment region (S/MAR) DNA and forms a molecular assembly point to allow the formation of a 'transcriptosomal' complex (consisting of SR proteins and RNA polymerase II) coupling transcription and RNA processing (By similarity). Can function as an estrogen receptor corepressor and can also bind to the HSP27 promoter and decrease its transcription. When associated with RBMX, binds to and stimulates transcription from the SREBF1 promoter (By similarity). Can inhibit cell proliferation.

**SAFB1 / SAFB Antibody (aa345-357, clone 6F7) - References**

Oesterreich S.,et al.J. Cell. Biochem. 67:275-286(1997).  
Ota T.,et al.Nat. Genet. 36:40-45(2004).  
Grimwood J.,et al.Nature 428:529-535(2004).  
Totoki Y.,et al.Submitted (MAR-2005) to the EMBL/GenBank/DDBJ databases.  
Bienvenut W.V.,et al.Submitted (JUL-2009) to UniProtKB.